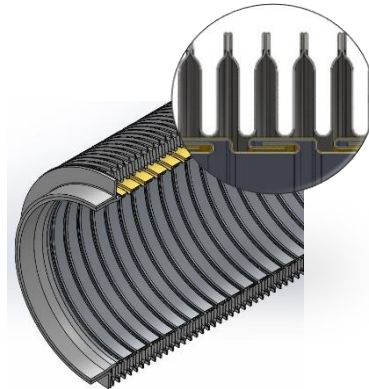




Gastight Hose (GTH)



(GTHGEN3)

Material:

- Stainless steel

- High moveability and flexibility
- Low stiffness and low structural stresses
- Compensation of engine induced movements
- Compensation of installation tolerances
- Resonance stability by self-adjusting and continuous damping
- Gastight outer shell
- Resistance against stone impacts
- < 10 °C temperature loss
- < 220 °C surfaces temperature at 450°C exhaust gas temperature

Applications:

- Used as decoupling element in On- and Off-Road vehicles
- Individual production of components and insulated exhaust line systems based on customers' design and requirements

Services:

- Internal and external product validation under real conditions, like mounting position, movements, corrosion, vibrations and in combination with thermal loads

Possible adaptor techniques:

- Clamps
- V-Clamps
- Insulated bent pipes
- NO_x sensor carriers
- Flanges
- Mounting brackets

Technical parameters according to customer's requirements.



Technical Data

Customer requirement		GTH ^{GEN3} solution	
Outer diameter [mm]	Outer diameter [inch]	Outer diameter [mm]	Inside width [mm]
88,9	3.5	120,2	85,7
101,6	4.0	132,9	98,4
110,0		141,3	106,8
114,3	4.5	145,4	110,9
120,0		151,6	117,1
127,0	5.0	158,6	124,1
130,0		161,3	127,1



Any other diameter / specification needed? Our engineers will be pleased to develop the best in class solution for your specific application.

Contact

Westfalia Metal Hoses GmbH
Am Schwanenweiher 1
57271 Hilchenbach
Germany
eMail: info-wsh@westfalia-mh.com
Phone: +49 2733 283 100